

Bajaj Finserv Healthcare Fund

An open ended equity scheme following pharma, healthcare and allied theme

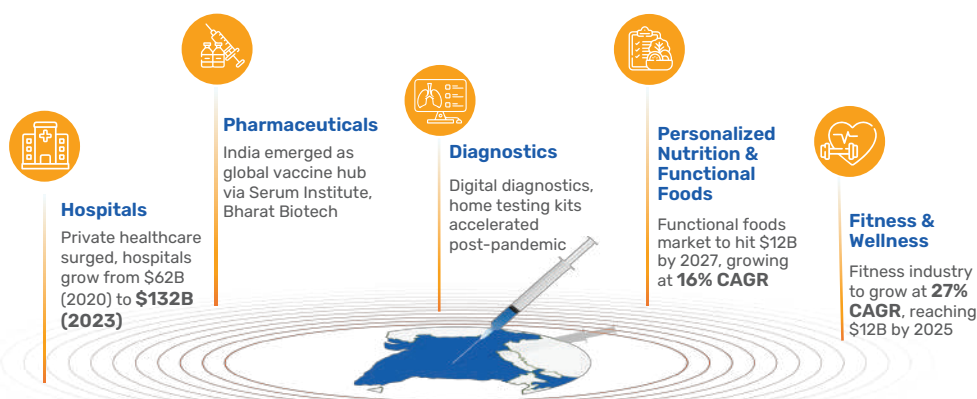
Data as on 31st October 2025

Portfolio Strategy

The Bajaj Finserv Healthcare Fund is an open ended actively managed equity scheme which aims to provide long-term capital appreciation by investing 80-100% of total assets in equity and equity related securities of companies classified under 'Healthcare Equipment & Supplies, Healthcare Services, Pharmaceuticals & Biotechnology' as per Industry classification issued by AMFI from time to time and any other industry/sector that forms part of the benchmark index.




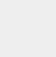






The Scheme may also invest in companies involved in other healthcare, pharmaceutical and allied sectors. The scheme would invest in stocks across market capitalization, however, may take concentrated exposure to certain stocks/sectors/industry.

Indian Healthcare sector

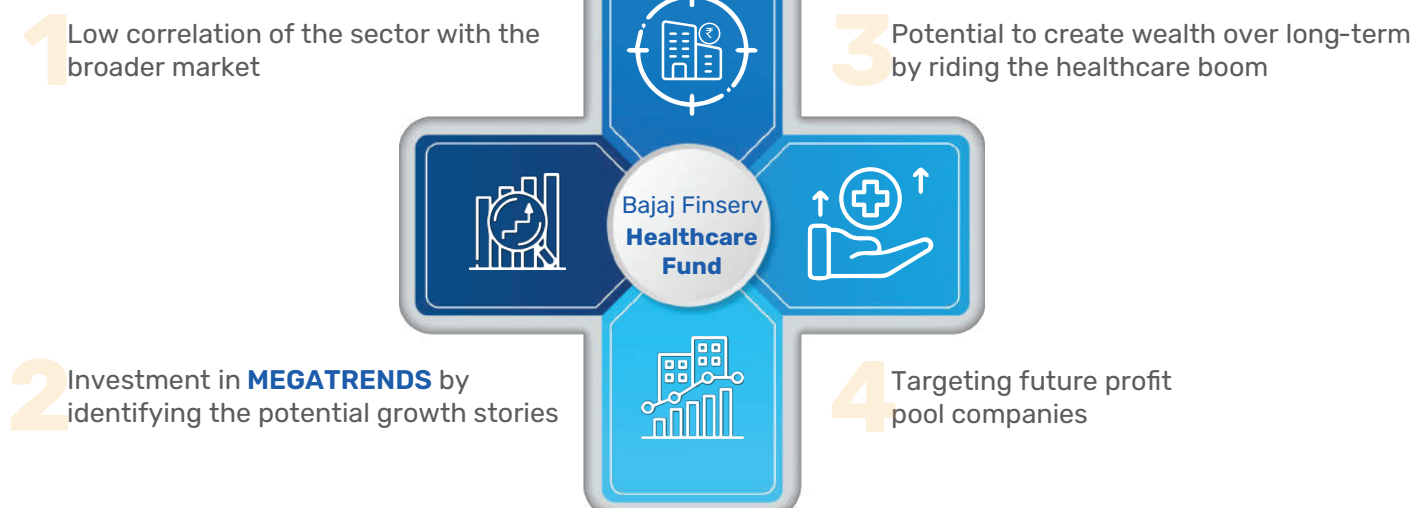


Source: ResearchAndMarkets, RedSeer, Invest India, Frost & Sullivan, Deloitte, Statista, Modor Intelligence, KPMG India

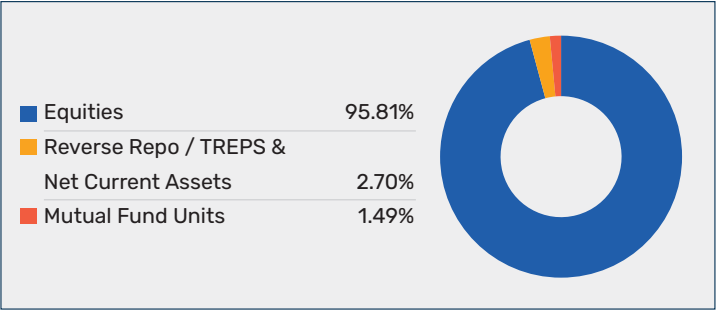
Fund Features

-  **Category:** Thematic Fund
-  **Inception Date:** 27th December 2024
-  **Fund Manager:** Mr. Nimesh Chandan and Mr. Sorbh Gupta (Equity portion)
Mr. Siddharth Chaudhary (Debt portion)
-  **Benchmark:** BSE Healthcare Total Return Index (TRI)
-  **Minimum Investment Amount:** Rs. 500/- and in multiples of Re. 1/- thereafter
-  **SIP Frequency:** Daily, Weekly, Fortnightly, Monthly, Quarterly
-  **Total Expense Ratio:** Regular- 2.37%
Direct- 0.72%
-  ***AUM (IN CR):** Month end AUM - INR 330.85
*The closing AUM as reported to SEBI & AMFI in the Monthly Cumulative Report (MCR)
-  **Entry load:** Nil
-  **Exit load:** Refer page 2

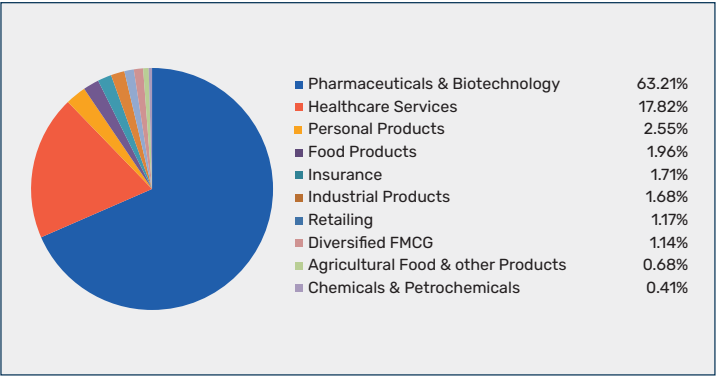
Why invest in Bajaj Finserv Healthcare Fund?



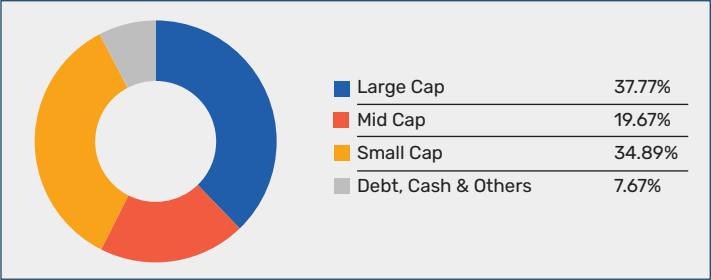
Asset Allocation



Composition By Industry (%)



Market Cap Allocation



Performance

Bajaj Finserv Healthcare Fund

Value of Investment of Rs.10,000

Period	Fund Returns (%)	Benchmark Returns (%)	Additional Benchmark Returns (%)	Fund (Rs)	Benchmark (Rs)	Additional Benchmark (Rs)
Bajaj Finserv Healthcare Fund - Regular - Growth						
Last 6 Months	12.90%	11.65%	13.27%	10,650	10,587	10,669
Bajaj Finserv Healthcare Fund - Direct - Growth						
Last 6 Months	14.69%	11.65%	13.27%	10,740	10,587	10,669
Returns as on 31st October, 2025						
Past performance may or may not be sustained in future. Different Plans i.e. Regular Plan and Direct Plan under the scheme have different expense structure. Benchmark: BSE Healthcare Total Return Index (TRI) Additional Benchmark: Nifty 50 TRI. Inception Date: 27th December 2024						
Period for which scheme's performance has been provided is computed basis last day of the previous month preceding the date of this material. Simple annualized returns have been provided as per the extant guidelines since the scheme has completed 6 months but not 1 year. Face Value per unit: Rs. 10.						
The Fund managers of the scheme: Mr. Nimesh Chandan (Equity Portion), Mr. Sorbh Gupta (Equity Portion), Mr. Siddharth Choudhary (Debt Portion). For the performance of other schemes managed by Fund Managers which has completed 1 year or more than 1 year since inception, refer to table below.						
Mr. Nimesh Chandan also manages equity portion of Bajaj Finserv ELSS Tax Saver Fund, Bajaj Finserv Multi Cap Fund. He also manages Bajaj Finserv Gilt Fund, Bajaj Finserv Small Cap Fund.						
Mr. Siddharth Chaudhary manages Bajaj Finserv Gilt Fund. He manages debt portion of Bajaj Finserv ELSS Tax Saver Fund, Bajaj Finserv Multi Cap Fund, Bajaj Finserv Consumption Fund, Bajaj Finserv Small Cap Fund, Bajaj Finserv Equity Savings Fund.						
Mr. Sorbh Gupta manages equity portion of Bajaj Finserv Consumption Fund Bajaj Finserv ELSS Tax Saver Fund, Bajaj Finserv Multi Cap Fund, Bajaj Finserv Small Cap Fund, Bajaj Finserv Equity Savings Fund.						
However, since these funds have not completed 1 year, the performance are not disclosed.						

Equity Holding

Name (Top 10 Holdings)	Equity (% to NAV)	Futures (% to NAV)
Divi's Laboratories Limited	8.81%	
Sun Pharmaceutical Industries Limited	7.66%	
Apollo Hospitals Enterprise Limited	6.26%	
Cipla Limited	5.00%	
Neuland Laboratories Limited	4.09%	
Biocon Limited	3.76%	
Fortis Healthcare Limited	3.66%	
Piramal Pharma Limited	3.24%	
Emcure Pharmaceuticals Limited	3.22%	
Aurobindo Pharma Limited	3.18%	3.48%
Other Equities	43.45%	-
Total Equities	92.33%	3.48%

Exit Load

- if units are redeemed / switched out within 3 months from the date of allotment: 1% of applicable NAV.
- if units are redeemed/switched out after 3 months from the date of allotment, no exit load is payable.

Stocks

New Entries	Total Exits
Rubicon Research Limited	PB Fintech Limited
	Nestle India Limited

	1 Year			3 Year			5 Year		
Fund Name	Regular	Direct	Benchmark	Regular	Direct	Benchmark	Regular	Direct	Benchmark
Bajaj Finserv Banking and PSU Fund ^{ss}	7.87%	8.46%	7.69%	NA	NA	NA	NA	NA	NA
Bajaj Finserv Flexi Cap Fund ^s	7.14%	8.59%	5.32%	NA	NA	NA	NA	NA	NA
Bajaj Finserv Money Market Fund [*]	7.12%	7.80%	7.17%	NA	NA	NA	NA	NA	NA
Bajaj Finserv Liquid Fund ^{##}	6.59%	6.77%	6.69%	NA	NA	NA	NA	NA	NA
Bajaj Finserv Large and Mid Cap Fund ^{^^}	3.63%	5.12%	6.47%	NA	NA	NA	NA	NA	NA
Bajaj Finserv Overnight Fund ^{**}	5.99%	6.05%	6.04%	NA	NA	NA	NA	NA	NA
Bajaj Finserv Balanced Advantage Fund [^]	5.25%	6.83%	7.29%	NA	NA	NA	NA	NA	NA
Bajaj Finserv Large Cap Fund ^{***}	4.92%	6.48%	6.48%	NA	NA	NA	NA	NA	NA
Bajaj Finserv Multi Asset Allocation Fund ^{^^^}	10.23%	11.91%	11.84%	NA	NA	NA	NA	NA	NA
Bajaj Finserv Arbitrage Fund [@]	6.02%	6.76%	7.74%	NA	NA	NA	NA	NA	NA
Bajaj Finserv Nifty 1D Rate Liquid ETF - Growth ^{sss}	5.60%	NA	6.04%	NA	NA	NA	NA	NA	NA

Inception Dates: Bajaj Finserv Money Market Fund – 24th Jul 2023, Bajaj Finserv Liquid Fund – 5th Jul 2023, Bajaj Finserv Overnight Fund – 5th Jul 2023, Bajaj Finserv Flexi Cap Fund – 14th Aug 2023, Bajaj Finserv Arbitrage Fund - 15th Sep 2023, Bajaj Finserv Nifty 1D Rate Liquid ETF - Growth – 28th May 2024, Bajaj Finserv Banking and PSU Fund – 13th Nov 2023, Bajaj Finserv Large Cap Fund – 20th August 2024, Bajaj Finserv Balanced Advantage Fund – 15th Dec 2023, Bajaj Finserv Large and Mid Cap Fund – 27th Feb 2024 and and Bajaj Finserv Multi Asset Allocation Fund – 3rd June 2024
Returns as on 31st October, 2025

Disclaimer: Past performance may or may not be sustained in the future. Different plans have different expense structure. Period for which scheme's performance has been provided is computed basis last day of the previous month preceding the date of this material. Returns are compounded annualized.

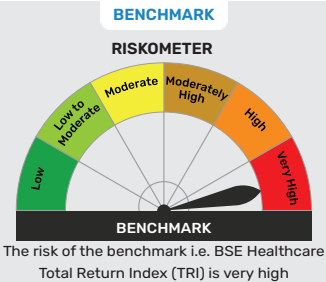
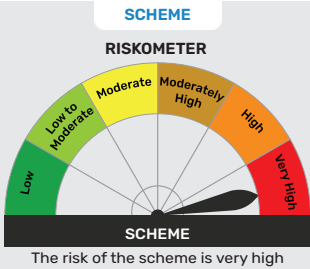
Benchmark: #Nifty Money Market Index A-I, ##Nifty Liquid Index A-I, **CRISIL Liquid Overnight Index, ^sBSE 500 TRI, [@]Nifty 50 Arbitrage Index (TRI), ^{sss}Nifty 1D Rate Index, ^{***}Nifty 100 Total Return Index (TRI), ^{ss}Nifty Banking & PSU Debt Index A-II, ^{*}NIFTY 50 Hybrid Composite debt 50:50 Index, ^{^^}Nifty Large Midcap 250 TRI and ^{^^^}65% Nifty 50 TRI + 25% Nifty Short Duration Debt Index + 10% Domestic Prices of Gold

PRODUCT LABEL

This product is suitable for investors who are seeking*:

- wealth creation over long term
- to invest predominantly in equity and equity related instruments of pharma, healthcare and allied companies.

*Investors should consult their financial advisers if in doubt about whether the product is suitable for them



Disclaimer
This document should not be treated as endorsement of the views/opinions or as an investment advice. This document should not be construed as a research report or a recommendation to buy or sell any security. This document alone is not sufficient and should not be used for the development or implementation of an investment strategy. The recipient should note and understand that the information provided above may not contain all the material aspects relevant for making an investment decision. The decision of the Investment Manager may not always be profitable as such decisions are based on the prevailing market conditions and the understanding of the Investment Manager. Actual market movements may vary from the anticipated trends. Neither Bajaj Finserv Mutual Fund / Bajaj Finserv Mutual Fund Trustee Limited / Bajaj Finserv Asset Management Limited nor its Directors or employees shall be liable for any damages whether direct or indirect, incidental, punitive special or consequential including lost revenue or lost profits that may arise from or in connection with the use of the information. Investors are advised to consult their own investment advisor before making any investment decision in light of their risk appetite, investment goals and horizon. This information is subject to change without any prior notice.